

ANNUAL REPORT 2015



THANK YOU.

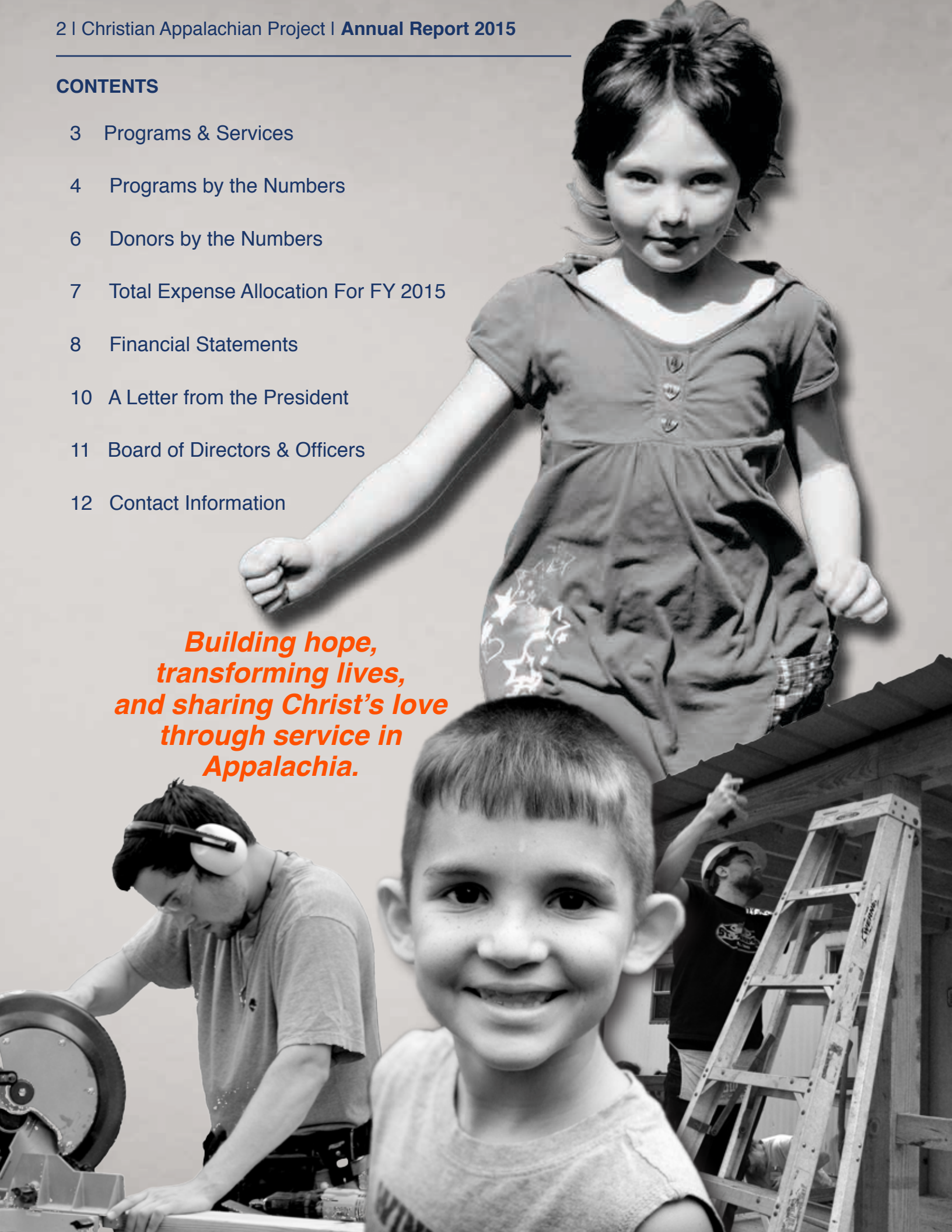
For more than 50 years, the work of **Christian Appalachian Project (CAP)** has been made possible because of the generosity of others. We are grateful for the charitable contributions and financial support of individual donors, partner organizations, foundations, annuitants, volunteers, and friends. Because of you, ————— we are able to continue —————

building hope, transforming lives, and sharing Christ's love through service in Appalachia.

CONTENTS

- 3 Programs & Services
- 4 Programs by the Numbers
- 6 Donors by the Numbers
- 7 Total Expense Allocation For FY 2015
- 8 Financial Statements
- 10 A Letter from the President
- 11 Board of Directors & Officers
- 12 Contact Information

*Building hope,
transforming lives,
and sharing Christ's love
through service in
Appalachia.*

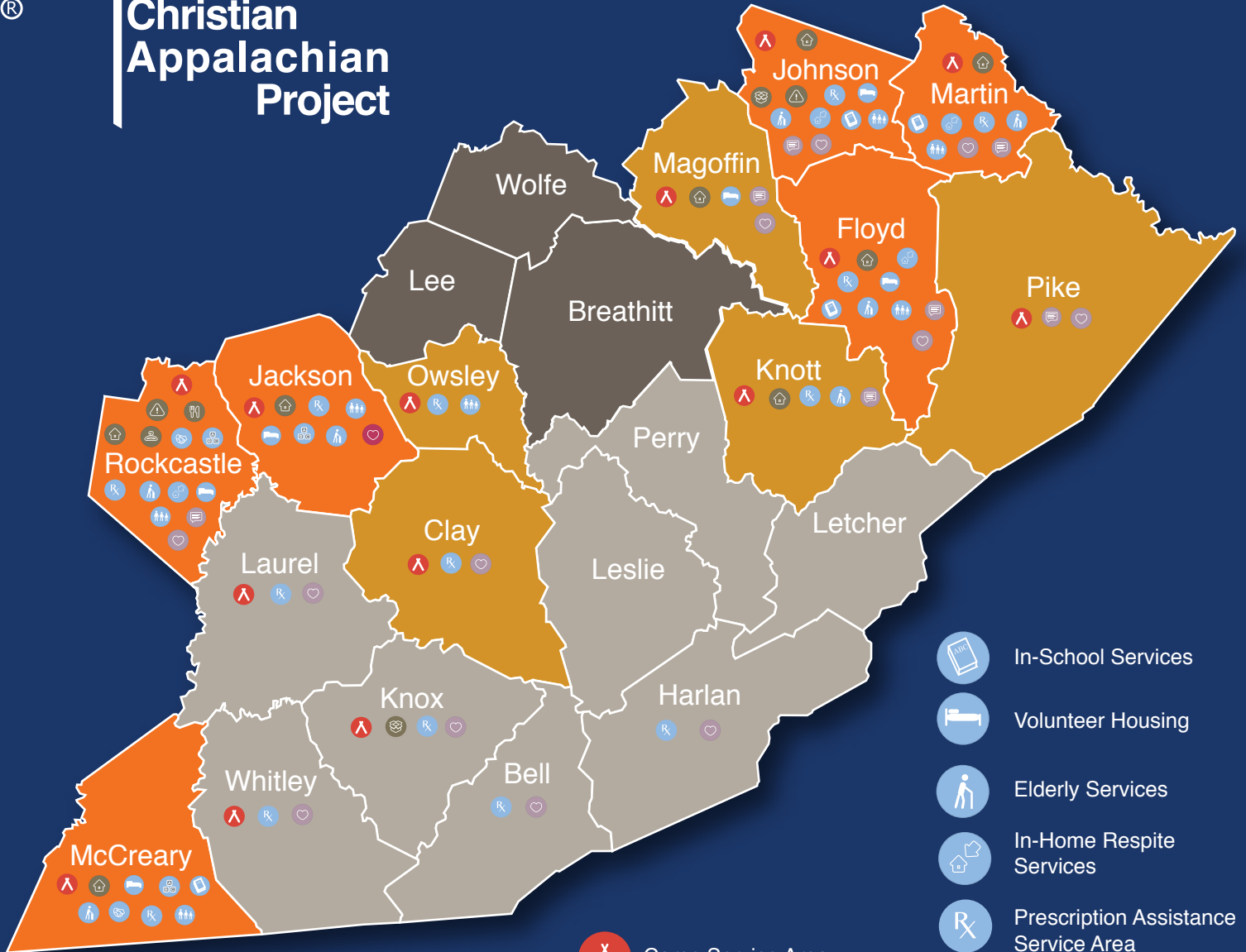




**Christian
Appalachian
Project**

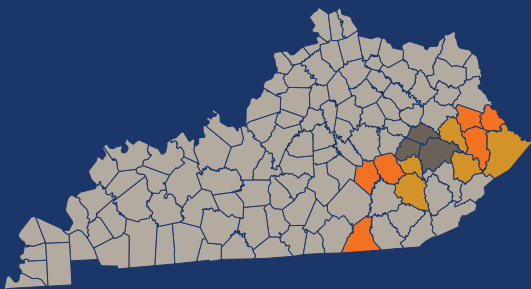
Programs & Services

- Primary County
- Secondary County
- Gap County



- In-School Services
- Volunteer Housing
- Elderly Services
- In-Home Respite Services
- Prescription Assistance Service Area
- Child & Family Development Center
- In-Home Infant/Toddler Services
- Family Advocacy
- Domestic Violence Service Area
- Family Life Counseling Services

- Camp Service Area
- Grateful Bread Food Pantry
- Grateful Threadz Thrift Store
- Housing Program
- Disaster Relief Offices & Warehouse
- Operation Sharing Warehouse



**15,915 PEOPLE WERE SERVED
THROUGH 18 DIRECT HUMAN SERVICE
PROGRAMS IN EASTERN KENTUCKY.**

PROGRAMS BY THE NUMBERS



FAMILY ADVOCACY

931

FAMILIES SERVED



HOUSING PROGRAM

390

HOMES REPAIRED AND REBUILT



GRATEFUL BREAD FOOD PANTRY

2,600

PARTICIPANTS SERVED



SUMMER CAMP

1,079

CHILDREN ATTENDED

2,757

YOUTH LEADERSHIP AND EDUCATIONAL SERVICE PARTICIPANTS

“It’s wonderful [that there are] people who have a heart – who really care about and want you to be better off than you were. I thank God everyday that all these people are so good-hearted to give gifts.”
– Barbara, Participant



FAMILY LIFE COUNSELING

1,175

INDIVIDUALS RECEIVED COUNSELING



PRESCRIPTION ASSISTANCE

467

INDIVIDUALS RECEIVED ASSISTANCE

“CAP means a lot to me. I wouldn’t know what to do without them.”
– Maria, Participant



VOLUNTEER PROGRAM

1,273

INDIVIDUALS VOLUNTEERED



CHILD DEVELOPMENT CENTERS

461

ACTIVE PARTICIPANTS



OPERATION SHARING

\$56+ million

DONATED GOODS DISTRIBUTED
THROUGHOUT 15 STATES
TO 1.5 MILLION PEOPLE IN NEED



GRATEFUL THREADZ THRIFT STORE

15,049

TRANSACTIONS LOGGED



ELDERLY SERVICES

165

PARTICIPANTS SERVED

“You are all truly angels! Thank you for showing my children that there really is still goodness in this hard world of ours. Thank you to everyone who helped, sponsored, worked, and volunteered this year. Your very generous giving, support, and kindness is very much appreciated by myself and my family. No words can say to you all how much joy you have given us. God bless you all!”

– Donna, Participant

DONORS BY THE NUMBERS

261,240

DONORS CONTRIBUTED TO CAP IN FY15

80,077

FIRST-TIME DONORS CONTRIBUTED TO CAP
IN FY15

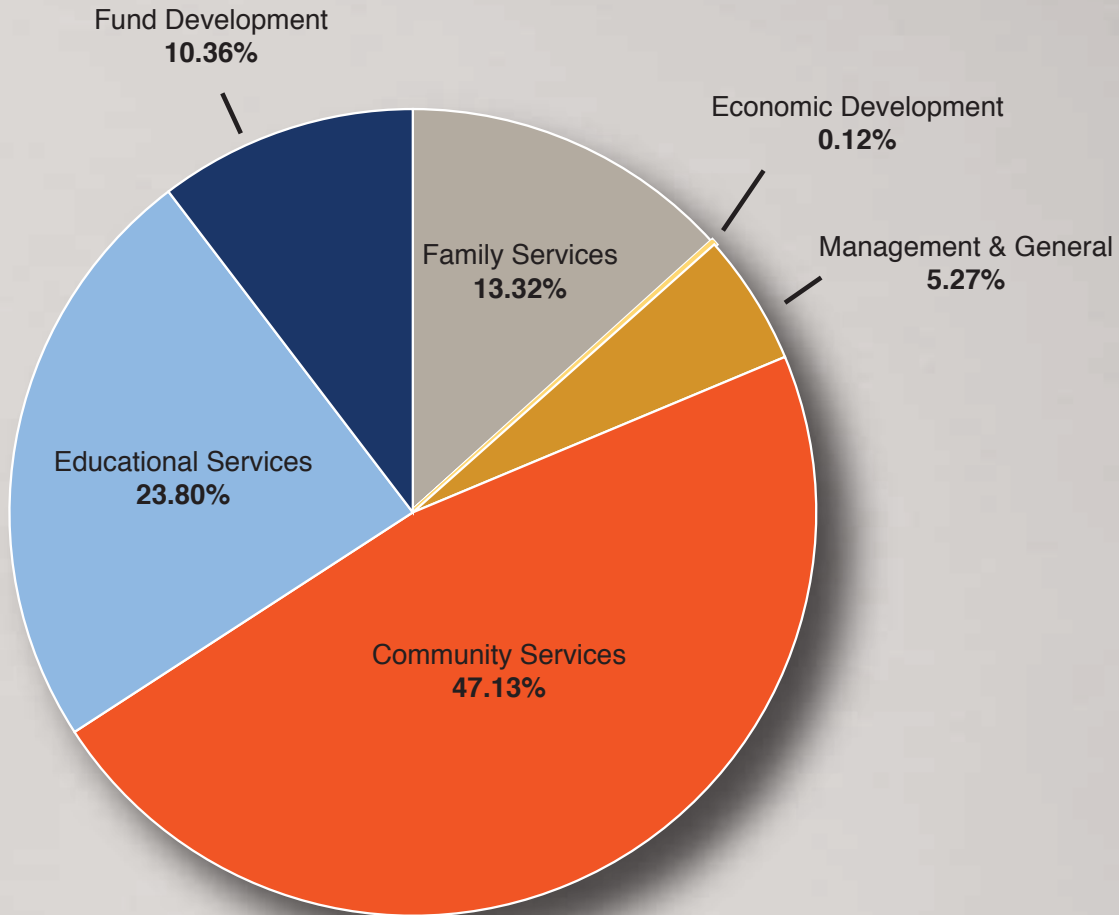
“I know no one in Appalachia. I had heard a lot about Appalachia and one time while traveling on vacation, we pulled off the interstate and drove through the Appalachian region. It was a very poor area, very heartbreaking. Not too long after that, I received a brochure about CAP and how I could help their mission. I have been giving ever since.”

– Mrs. Julia Conner, Donor



IN 2015, CAP'S MISSION WAS SUPPORTED BY DONORS
IN EVERY U.S. STATE, PUERTO RICO, CANADA, MULTIPLE
U.S. TERRITORIES, AND ENGLAND

TOTAL EXPENSE ALLOCATION FOR FY 2015



Christian Appalachian Project is a 501(c)(3) not-for-profit corporation qualified to receive tax deductible contributions.

FINANCIAL STATEMENTS

Statement of Financial Positions, As of August 31, 2015

ASSETS		US Dollars (\$)
	Cash	1,177,885
	Accounts Receivable	45,353
	Contributions Receivable (Net)	2,025,744
	Accrued Interest Receivable	44,349
	Inventories	632,892
	Prepaid Expenses	99,024
	Investments	16,337,176
	Notes Receivable	40,122
	Property and Equipment (Net)	10,418,059
	TOTAL ASSETS	30,820,604
LIABILITIES		US Dollars (\$)
	Accounts Payable	877,649
	Accrued Expenses	992,566
	Annuity Obligations	2,261,620
	Capital Leases Payable	17,742
	Note Payable	1,029,508
	TOTAL LIABILITIES	5,179,085
NET ASSETS (UNRESTRICTED)		US Dollars (\$)
UNRESTRICTED BUT DESIGNATED BY THE BOARD OF DIRECTORS		
	Disaster Emergency Relief Program	100,000
	Self-insurance Program	633,500
	Expended for Property and Equipment	10,418,059
	Annuity Obligations	3,271,227
	TOTAL UNRESTRICTED BUT DESIGNATED BY THE BOARD OF DIRECTORS	14,422,786
	Unrestricted and Undesignated, Available for General Activities	8,904,872
	TOTAL NET ASSETS (UNRESTRICTED)	23,327,658
NET ASSETS (RESTRICTED)		US Dollars (\$)
	Temporarily restricted	683,930
	Permanently restricted	1,629,931
	TOTAL NET ASSETS (RESTRICTED)	25,641,519
	TOTAL LIABILITIES AND NET ASSETS	30,820,604

The Financial summaries presented here were compiled by management. A copy of the FY2015 Audited Financial Statements can be obtained by contacting Guy Adams, President or Sharon Adams, Treasurer. Christian Appalachian Project is a 501C(3) not-for-profit corporation qualified to receive tax deductible contributions.

FINANCIAL STATEMENTS

Statement of Activities, Year Ended August 31, 2015

REVENUES, GAINS, AND OTHER SUPPORT	US Dollars (\$)
Contributions of Cash and Securities	18,942,228
Legacies and Bequests	5,695,745
Government Grants	999,770
Contributions of Materials	57,465,007
Contributed Services	929,829
Program Revenue	525,088
Investment Income	328,570
Net Realized Gains on Investments	134,130
Net Unrealized Gains (Losses) on Investments	(701,495)
Royalty Income	596,164
Gain on Sale of Property and Equipment	46,389
TOTAL REVENUES, GAINS, AND OTHER SUPPORT	84,961,425
EXPENSES (PROGRAM SERVICES)	US Dollars (\$)
Family Services	11,121,065
Economic Development	98,094
Community Services	39,363,433
Education Services	19,878,762
TOTAL EXPENSES (PROGRAM SERVICES)	70,461,354
EXPENSES (SUPPORTING SERVICES)	US Dollars (\$)
Management and General	4,400,120
Fund Development	8,652,465
TOTAL EXPENSES (SUPPORTING SERVICES)	13,052,585
TOTAL EXPENSES	83,513,939
ADJUSTMENTS	US Dollars (\$)
Actuarial Adjustment on Annuity Obligations	(22,164)
TOTAL EXPENSES AND LOSSES	83,491,775
NET ASSETS (CHANGES/ADJUSTMENTS)	US Dollars (\$)
Change in Net Assets	1,469,650
Net Assets at Beginning of Year	24,171,869
NET ASSETS AT THE END OF YEAR	25,641,519

The Financial summaries presented here were compiled by management. A copy of the FY2015 Audited Financial Statements can be obtained by contacting Guy Adams, President or Sharon Adams, Treasurer. Christian Appalachian Project is a 501C(3) not-for-profit corporation qualified to receive tax deductible contributions.



Dear Friends in Christ,

More than 50 years ago, a deep need was seen in Eastern Kentucky and Christian Appalachian Project (CAP) emerged to meet this need. The lives of children and their families, the elderly, and individuals with disabilities in Appalachia have been transformed by the vital work of CAP - because of YOU and the millions of other donors, volunteers, churches, and partner organizations who saw and responded to the need.

In 2015, when we shared with you the story of Barbara and her daughter Gloria, whose home had deteriorated to a dangerous and unlivable condition, you saw the need and responded rapidly and generously. Because of you, we were able to provide them a mobile home that ensures that they will be safe, warm, and dry. In their new home, equipped with working plumbing, adequate heating, and a safety ramp, we have seen the hope you have built for Barbara and Gloria.

Last year, when the sky darkened over Johnson County, Ky., unleashing heavy rains that led to catastrophic flooding, you saw the need and compassionately supported CAP's Disaster Relief efforts. Because of you, desperately needed food, clothing, emergency supplies, and two semi-truck-loads of clean water were available to sustain the ailing community of Flat Gap. In the months since the flooding, as we remained to offer ongoing cleanup and housing repairs, we have seen lives transformed and tragedy overcome.

For every Barbara and Gloria, for every Johnson County, where the impact of CAP's work has been so visibly powerful, there are countless lives you have affected in less visible but equally powerful ways. We don't see the child who lays her head on her pillow and thanks God for her full stomach at the end of the day. We don't see the young man who confidently strides into school wearing pants without holes and a warm jacket for the first time. We don't see the sigh of relief from the full-time caregiver as she watches the In-Home Respite Service pull into the driveway to offer her just a few hours of reprieve so she can tend to herself. We don't see the elderly gentleman, isolated and alone for most of his week, as he eagerly prepares for his regular visit from a CAP caseworker.

What we have seen, however, is hope built, lives transformed, and Christ's love shared with people in need in Appalachia this year. We have seen the lasting impact of your prayers and charitable contributions on this region. For the many more people in need in Appalachia, we are hopeful, because we know that wherever you see a need, you will respond.



Our Deepest Gratitude,

Guy Adams
President

P.S. *I want to personally thank you for being a lifeline to people in need in Appalachia this year, in ways both profoundly seen and unseen.*

CHRISTIAN APPALACHIAN PROJECT 2015 OFFICERS

Guy Adams
President & CEO

Sharon Adams
Controller, Corporate Treasurer

Randy Beckham
Vice President of Administration

Phyllis Caudill
Assistant VP of Philanthropy

Gloria Jordan
Assistant Vice President of Administration

Anita Seals
Vice President of Human Services

COMING IN 2016

March - WorkFest

April - YouthFest

May 7 - National Day of Prayer

June - July - Summer Camps

September - Hunger Walk

**October 20 - Champions of Appalachia
Celebration & Award Presentation**

BOARD OF DIRECTORS

Kevin Doyle
Chair
Lexington, KY

Shanna Elliott
Vice Chair
Pikeville, KY

Guy Adams
President/CEO
Lexington, KY

Kaye Baird
Pikeville, KY

Nancy Horn Barker
Winchester, KY

Mark Barrens
Louisville, KY

Jackie Collier
Richmond, KY

**Joyce Taylor
Cummins**
Mount Vernon, KY

Denny Dorton
Paintsville, KY

Bob Gound
Staffordsville, KY

Frank Heaberlin
Paintsville, KY

Bob Hutchison
Staffordsville, KY

Holly James
Lexington, KY

Rob Lawson
Lexington, KY

Jon Lett
Ashland, KY

Haley McCoy
Richmond, KY

Marty Preston
Lexington, KY

Chris Tackett
Ivel, KY

Judge Wilson
Versailles, KY

LEGAL COUNSEL

John Rhorer
Lexington, KY

Financial and other information about Christian Appalachian Project, Inc.'s (CAP) purpose, programs and activities can be obtained by contacting Guy Adams at 485 Ponderosa Drive, PO Box 1768, Paintsville, KY 41240, 1-859-269-0635, or for residents of the following states, as stated below. Florida: SC No. CH98 A COPY OF THE OFFICIAL REGISTRATION AND FINANCIAL INFORMATION MAY BE OBTAINED FROM THE DIVISION OF CONSUMER SERVICES BY CALLING TOLL-FREE, WITHIN THE STATE, 1-800-435-7352 (or go to www.800helpfla.com). Maryland: For the cost of copies and postage, documents and information submitted in compliance with the Maryland Solicitations Act are available from the Secretary of State, Statehouse, Annapolis, MD 21401, 1-800-825-4510. Michigan: MICS No. 9993. Mississippi: The official registration and financial information of Christian Appalachian Project, Inc. may be obtained from the Mississippi Secretary of State's office by calling 1-888-236-6167. New Jersey: INFORMATION FILED WITH THE ATTORNEY GENERAL CONCERNING THIS CHARITABLE SOLICITATION AND THE PERCENTAGE OF CONTRIBUTIONS RECEIVED BY THE CHARITY DURING THE LAST REPORTING PERIOD THAT WERE DEDICATED TO THE CHARITABLE PURPOSE MAY BE OBTAINED FROM THE ATTORNEY GENERAL OF THE STATE OF NEW JERSEY BY CALLING (973) 504-6215 AND IS AVAILABLE ON THE INTERNET AT <http://www.state.nj.us/ps/ca2/charities/>.

New York: You may obtain copies of our annual report by writing to us at the address above or to the Office of the Attorney General, Charities Bureau, 120 Broadway, New York, NY 10271.

North Carolina: Financial information about this organization and a copy of its license are available from the State Solicitation Licensing Branch at 1-888-830-4989 (within North Carolina) or (919) 807-2214 (outside of North Carolina).

Pennsylvania: The official registration and financial information of Christian Appalachian Project, Inc. may be obtained from the Pennsylvania Department of State by calling toll-free, within Pennsylvania, 1-800-732-0999. Virginia: A financial statement is available by writing to the State Ofc. of Consumer Affairs in the Dept. of Ag. and Consumer Svcs, P.O. Box 1163, Richmond, VA 23218, (804) 786-2373. Washington: The required notice of solicitation is on file in the Office of the Secretary of State. Additional financial and other information is available from the Secretary of State by calling 1-800-332-4483. West Virginia: West Virginia residents may obtain a summary of the registration and financial documents from the Secretary of State, State Capitol, Charleston, WV 25305. CONTRIBUTIONS ARE DEDUCTIBLE FOR FEDERAL INCOME TAX PURPOSES IN ACCORDANCE WITH APPLICABLE LAW. REGISTRATION IN A STATE DOES NOT IMPLY ENDORSEMENT, APPROVAL, OR RECOMMENDATION OF CHRISTIAN APPALACHIAN PROJECT, INC. BY THE STATE. Funds received in excess of what is needed to support this ministry will be distributed to other CAP missions. From time to time CAP rents or exchanges its list of supporters with other trusted organizations to benefit CAP's programs and activities. If you do not wish to participate in CAP's list rental or exchange activities, or if you wish to modify the frequency of future communications from CAP, please write to us or give us a call at 1-866-270-4227.



485 Ponderosa Drive
Paintsville, KY 41240

NON-PROFIT ORGANIZATION
U.S. POSTAGE
PAID

Christian Appalachian Project



CONTACT INFORMATION

Donations/Office of Philanthropy:

Christian Appalachian Project
P.O. Box 55911
Lexington, KY 40555
1.866.270.4CAP (4227)
capinfo@chrisapp.org

CAP Volunteer Program:

Volunteer Program
310 Beiting Lane
Mt. Vernon, KY 40456
1.800.755.5322
volunteer@chrisapp.org

Mission Teams:

Christian Appalachian Project
P.O. Box 257
Martin KY 41649
1.606.285.0961
groups@chrisapp.org

DONATE NOW

Visit our website, chrisapp.org, or scan the code to continue supporting CAP's mission of building hope, transforming lives, and sharing Christ's love in Appalachia.

Scan here to donate today!

